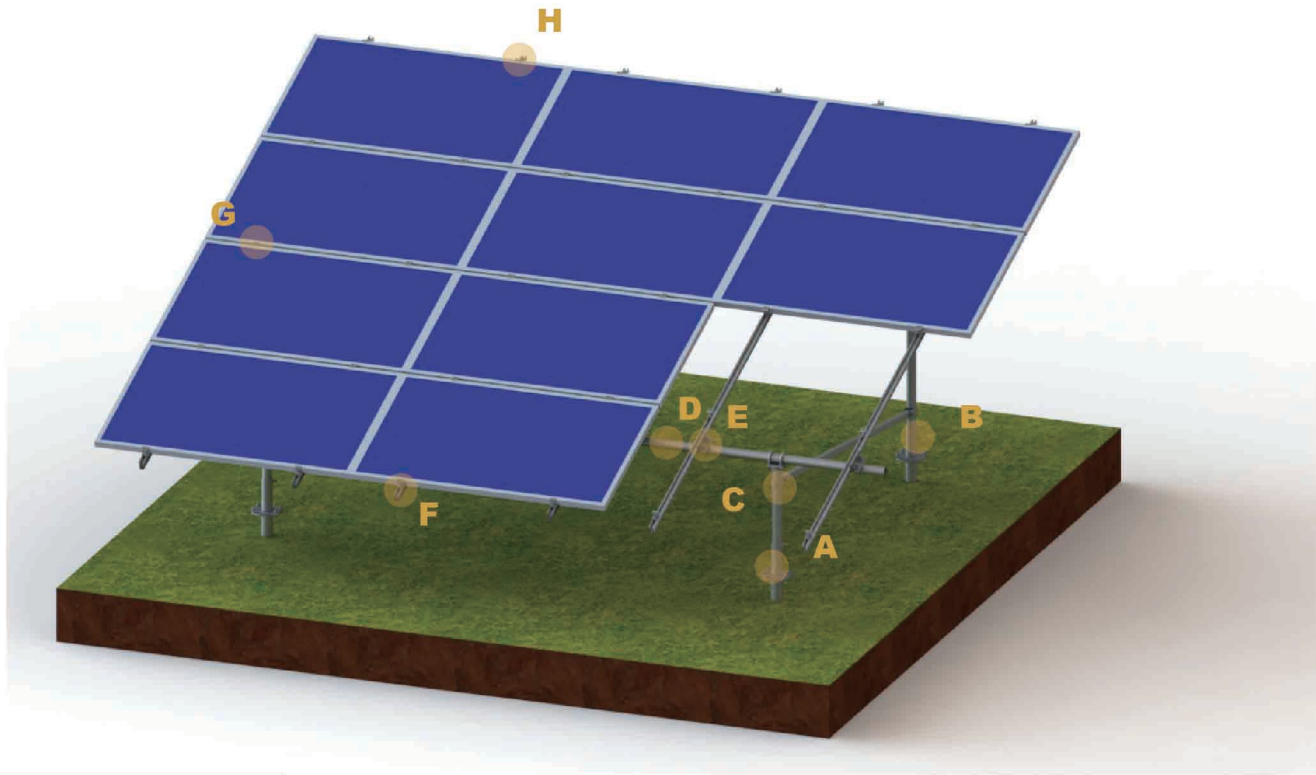


Ground Mounting ST1

St1 Ground mounting is a solution including steel structure and aluminum rails. It is suitable for both small and large-scale solar plants. With a flexible connection, it can be installed onto the concrete base, and also the earth ground, even the slope can also be workable.

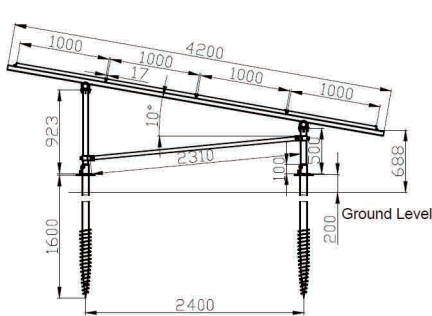


Brief Introduction

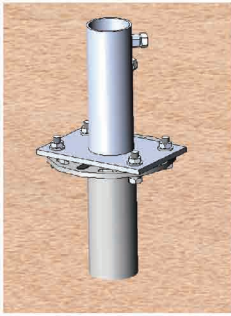
- Material: Steel Q235 & Aluminum 6005-T5
- Installation Site: Open Field, Earth or concret ground
- Height from the Ground: According to your requirement
- Module Tilt Angle : 0~60° according to your requirement or latitude
- Max. Wind Speed: 60m/s;
- Snow Load: 1.4KN/m²
- Warranty: 10 years warranty; 25 years service life.

Connecting Solutions

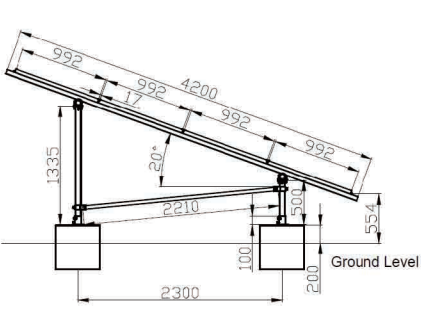
1. Ground Screws



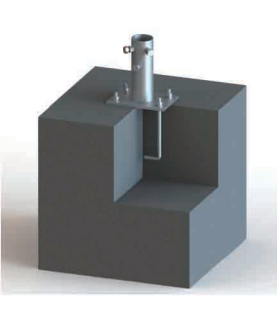
Ground Screw is suitable for earth ground footing
The ground screw should be 200mm out of ground



2. Concrete Foundations



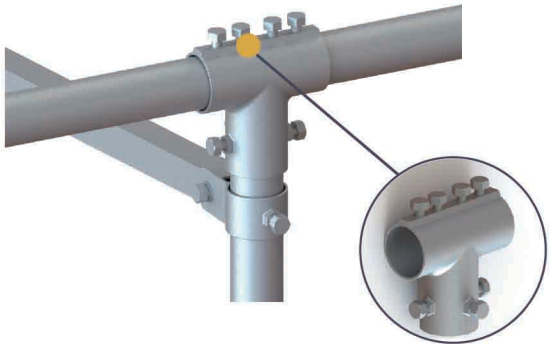
Concrete foundation is suitable for concrete or sand ground



Components Parts

A  UI-ST1-09 ◆ Description Leg Cap, Steel Q235 ◆ Function Fix front/rear Legs	B  UI-TFL/TRL ◆ Description Front/Rear Leg, Steel Q235 ◆ Function Support Cross Pipe	C  UI-ST1A-07 ◆ Description Fix Ring, Steel Q235 ◆ Function Fix Enforcement Pipe
D  UI-CP ◆ Description Cross Pipe, Steel Q235 ◆ Function Support Rails	E  UI-ST1-06 ◆ Description U Connector, Al 6005-T5 & Steel Q235 ◆ Function Fix Rail to Cross Pipe	F  UI-R ◆ Description Rail, Al 6005-T5 ◆ Function The frame supports the solar panel
G  UI-IC ◆ Description Mid clamp, Al 6005-T5 & SUS 304 ◆ Function Fix panel on the rail in the inner part	H  UI-EC ◆ Description End clamp, Al 6005-T5 & SUS 304 ◆ Function Fix panel on the rail at the end of panel	I  UI-TFR ◆ Description Enforcement Pipe, Steel Q235 ◆ Function Increase the strength of the mounting

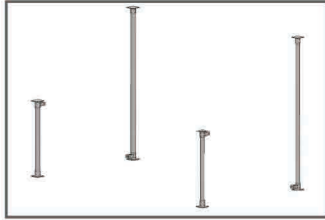
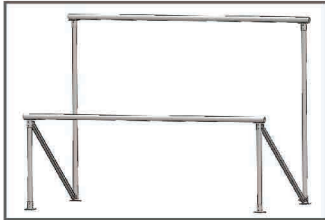
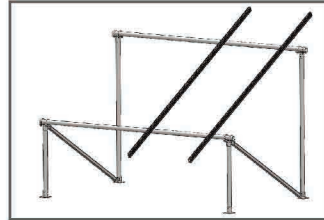
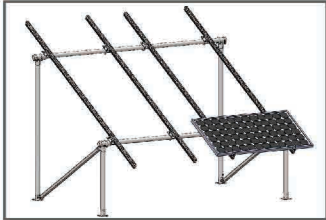
New Design for T connector



Advantage of T connector

- 01 Only pipe for both legs and cross pipe, save the packing space, save the transportation cost
- 02 Better strength for the connection part
- 03 Easier Installation

Brief Installation Guide

1 Install the legs according to the technical drawing and Installation Guide 	2 Connect the Cross pipe to the legs' top and fix with U bolt/T connectors 	3 Fix the rails cross to the cross pipe and fix with UI-ST1-06 as installation Guide 	4 Put panels onto rails and fix with clamps as 
---	---	---	---